

THE LAST FRONTIER

STANDING IN THE MOON'S SHADOW



ANTARCTIC ECLIPSE EXPEDITION

2003

"Journeys for Inquisitive Minds"
TravelQuest

SKY
A TELESCOPE

A Great Lifetime Travel Achievement

November 13 – 26, 2003

By Privately Chartered, Specially Equipped Aircraft

Limited to Just 38 Expedition Members

The total eclipse of the Sun on November 23, 2003, is the hardest one to reach in decades. The Moon's umbral shadow spends barely an hour on Earth, arcing across a remote stretch of Antarctica. Many eclipse-chasers will pass this one up, but you don't have to.

Join **Sky & Telescope** and TravelQuest International on the first expedition in the history of mankind, dedicated to witnessing a total eclipse of the sun on the Antarctic continent. This is a once-in-a-lifetime adventure – experience nearly 2 minutes of totality from the bottom of the world!

ITINERARY

Day 1 – Thu, Nov. 13, 2003 Depart for Chile

Expedition members will depart on an overnight flight to Santiago, Chile. Pre- and/or post-expedition travels may be added to this itinerary. Contact TravelQuest for details on special flights, rates, and add-on excursions. Meals aloft

Day 2 – Fri, Nov. 14 Arrive Punta Arenas

Arrive in Santiago this morning in time for the connecting flight to Punta Arenas. Upon your arrival at the airport in Punta Arenas a member of our staff will meet you and transfer you to our hotel. Our accommodations are centrally located, just steps from the city's main plaza. The balance of your day is free. Overnight: Hotel Austral, Punta Arenas (two nights); Meals aloft/Dinner

Day 3 – Sat, Nov. 15 Punta Arenas

Punta Arenas, the capital of Chile's Magallanes region, sits alongside the Straits of Magellan. In the 17th century, J. Byron discovered this location on the Brunswick Peninsula and named it "Punta Arenosa" (Sandy Point). The city of Punta Arenas, founded in the mid-1800s, grew into a center for commerce and culture that spread its influence over the entire region.

This morning we will enjoy a tour of the city. This evening, you are invited to join us for cocktails and an Antarctic briefing with our guides, including an update on the eclipse. B/L/D



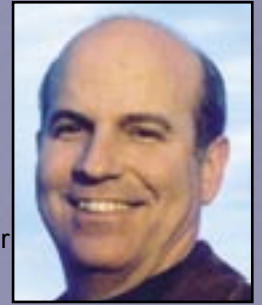
Your Expedition Leaders

Richard Tresch Fienberg, our eclipse expedition leader, is editor in chief of Sky & Telescope, the world's leading astronomy magazine. This will be his 5th journey to totality. Educated at Rice and Harvard Universities, Rick has spent many nights on mountaintops in Arizona and Hawaii studying dying stars, active galaxies, and the center of the Milky Way. At



Sky & Telescope, his insightful coverage of the Hubble Space Telescope mission won a citation from the National Space Club. Although trained as a professional astronomer, Rick remains an amateur at heart. He recently built an observatory under the dark skies of southern New Hampshire, where he observes regularly with a 12-inch computer-controlled telescope.

Aram Kaprielian is President of TravelQuest International, the world's leader in astronomy tours. Aram has been leading astronomy themed tours since 1986, when he led a group to the southern tip of Baja California to observe Halley's Comet. Aram has led groups all over the world - from journeys to Cro-Magnon cave art sites in Europe, to safaris in Africa, to cruises down the Nile. His passion for sharing one-of-a-kind travel experiences for groups is evident in every TravelQuest program. Eclipse Antarctica will be Aram's 7th total eclipse trip.



Sky & Telescope, the world's premier astronomy magazine, has been bringing the universe down to Earth for more than 60 years. Readers in 135 countries turn to Sky & Telescope each month to learn about the latest cosmic discoveries, the hottest telescopes and accessories for backyard stargazers, and the best techniques for capturing glorious images of celestial scenes. The magazine's editors are experts in both the science and the hobby of astronomy. With Eclipse Antarctica, they will have traveled to every continent on the planet in pursuit of total eclipses of the Sun.



TravelQuest International is the worldwide leader in astronomy themed travel. Founded with a focus on learning and adventure through travel, TravelQuest has never shied away from challenges. In 2001, TravelQuest was involved in the building of an eclipse village in remote western Madagascar. In 1999, TravelQuest was involved in negotiations between Kurdish and Turkish representatives that allowed viewing of a total solar eclipse outside the city of Diyarbakir, Turkey. Eclipse Antarctica will be TravelQuest's most ambitious and exciting eclipse trip to date.

Accommodations at Eclipse 1:

Eclipse 1 camp accommodations are surprisingly comfortable given its remote location. Expedition members overnight in state-of-the-art tents, tested for safety and comfort in the Antarctic region. These tents are designed for maximum warmth, with zippered doors and insulated floor covering. Meals are prepared by skilled staff and served in a separate dining tent. Hot water for washing (no showers) is provided, with separate toilet facilities for men and women.



For reservations and information contact: (800) 830-1998

What To Expect:

Participants must be fit and in good health. Travelers will be required to submit a physical evaluation from their doctor six months prior to the trip.

Travelers must be aware that all activities, including flights to, from, and within Antarctica are dependent on weather and local conditions.

Weather conditions in Antarctica may delay our departure from Punta Arenas on November 16, possibly by more than a day. In this event, expedition members will be on standby until conditions are safe for flying. If delays extend past seven nights, additional hotel and meal expenses are the responsibility of expedition members.

Likewise, poor weather conditions could extend our stay on the ice, thus delaying our return home. There will be no additional expense to travelers for additional days at Eclipse 1 base camp.

Should either of these scenarios occur, it will be the expedition manager's final decision whether extra days will or will not be added to the trip. It is important that expedition members obtain "changeable" air tickets. Call TravelQuest for details, (800) 830-1998.

Expedition Cost Per Person In US Dollars:

31-38 Members	\$35,000
26-30 Members	\$41,000
20-25 Members	\$46,500

Expedition Cost Includes:

- All lodging, meals, group transportation, excursions and other group activities from arrival in Punta Arenas on November 14, through departure from Punta Arenas on November 25
- Complete program of special events and activities
- Enrichment program of special discussions by Sky & Telescope study-leader and accompanying lecturers
- Professional staff to assist you through the trip
- Water and soft drinks during the day
- Wine and beer with evening meals
- Baggage handling in Punta Arenas
- Complete pre-expedition information and materials
- Amenity package
- \$1 million international emergency medical and evacuation policy for the duration of the expedition.

Not Included:

Air travel to and from Punta Arenas; Antarctic clothing and sleeping bag; Passport, visa and immunizations; and personal expenses. Contact TravelQuest to arrange flights to South America and for details on the special clothing rental/purchase program.

Payments & Terms:

To reserve a space, participants must contact TravelQuest to obtain a Reservation Packet, which must be returned, along with an initial advance payment of US\$4000 per person, payable by check or credit card.

A second advance payment of US\$17,000 per person, payable by check or wire transfer only, is due February 13, 2003. Final payment, payable by check or wire transfer only, is due July 13, 2003. If payments are not received by the dates specified, we reserve the right to cancel your booking and withhold return of all payments received, unless a change in your payment schedule has been agreed upon in writing by TravelQuest.

All advance payments are fully refundable, less a US\$2500 per person cancellation fee, if written notice of cancellation is received by TravelQuest by February 13, 2003. From February 14 through July 12, 2003, there will be a US\$6500 per person cancellation fee. After July 13, 2003, no refunds can be made. Refunds cannot be made to travelers who do not complete the tour for any reason at all. TravelQuest reserves the right to cancel this tour, and in such case the entire payment will be refunded without penalty or handling fee or further obligation to the traveler.

A \$1 million international emergency medical and evacuation coverage policy, for the duration of the expedition, is included in the cost of this expedition. Trip cancellation insurance is not included. Given the great distances traveled and the cost of this tour, we highly recommend travelers obtain this coverage. An insurance application form will be sent upon receipt of your initial payment.

Very Important Consumer Disclosure Notice:

Please read this notice. It constitutes part of your contract for travel related services.

There are certain inherent risks involved in participating in this trip and you must accept these risks as your own. It is your responsibility to take all appropriate medical advice prior to departure as to whether or not you are fit enough to undertake this trip.

TravelQuest International, its agents (collective) and sponsoring organizations act only as agent for the suppliers of transportation, accommodations, food and other goods and services provided to the participant. All arrangements to transport, accommodate and other services are made upon the express condition that TravelQuest and its agents shall not be liable for any direct, indirect, consequential or incidental damage, injury, or loss to person or property, accident, delay or irregularity of any kind occasioned by reason of any act or omission beyond its control, including without limitation, any act or negligence or breach of contract of any third party, such as an airline, cruise line, train, hotel, restaurant, ground handler, etc., who is to or does supply any goods or services to the tour.

Without limiting the foregoing, TravelQuest and its agents are not responsible for any loss or expenses due to delay or change in schedule, overbooking of accommodations, default of any third parties, sickness, weather, strikes, acts of God, acts of terrorism, war, quarantine, theft, criminal activity or for any other cause beyond our control.

TravelQuest reserves the right to change the itinerary of this tour without prior notice. If for any reason the tour is canceled by TravelQuest, TravelQuest shall incur no liability beyond the refund of all tour participants' deposits received.

TravelQuest reserves the right to increase the tour cost due to supplier price increases, currency fluctuations or any other unforeseen circumstance. If any tour member chooses not to participate in any included activity or meal, there will be no refund for that unused portion of the tour. There are no refunds should any tour member leave or be removed from the tour. This tour may be sold in conjunction with the services of any airline. The passenger tickets in use by the carriers, when issued, shall constitute the sole contract between the carriers and the passenger. Carriers are not responsible for any act or omission or events during the time tour participants are not aboard their conveniences.

Any litigation concerning this tour shall be brought in the state of Arizona, USA. Changes in this Disclosure Notice can be made only in writing and signed by an officer of TravelQuest. Advance payments paid by tour participant indicate acceptance of the above terms and conditions.

Journeys for Inquisitive Minds™

TravelQuest
INTERNATIONAL

305 Double D Drive, Prescott Arizona, USA 86303
Toll free within the USA and Canada 800-830-1998 tel: +928-445-7754 fax: +928-445-8771
e.mail eclipse@tq-international.com www.tq-international.com

Day 4 – Sun, Nov. 16 Flying South

As soon as the weather is suitable we will depart the hotel for the Punta Arenas Airport. After completing customs and immigration we will proceed to our privately chartered Ilyushin 76 transport jet. There will be time to take photographs before climbing aboard. After a safety briefing by the flight crew we will begin our flight south.

The flight time from Punta Arenas to our destination in Dronning Maud Land is approximately 7 hours, depending on winds. The beginning of our flight will take us over the South Atlantic Ocean, and at approximately 60° south latitude we will reach the winter limits of frozen seas. We are then entering the area governed by the Antarctic Treaty.

At 66.5° south latitude we will cross the Antarctic Circle. Along this circle the Sun doesn't set on the austral summer solstice and doesn't rise on the austral winter solstice. Farther south, these Antarctic days and nights lengthen until, at the South Pole, the Sun rises and sets only once a year!

Continuing our flight south, and if the skies are clear, we may see tabular icebergs and the ice shelves from which they calve. Some of these bergs can be the size of a small country and become a method of transport and a home for penguins and seals.

Our first sight of the Ice Continent will appear at the Princess Astrid Coast, 70° south latitude. This area of Antarctica lies between the terminus of Stancomb Wills Glacier at 20° west and the Shinnan Glacier at 44° east. Flying just a little farther south we will see the spectacular landscape of the Wohlthat Mountains

and the stark peaks of Dronning Maud Land, whose name was given for Queen Maud of Norway when the Norwegian Captain Hjalmar Riiser-Larsen discovered it in 1930. A thousand miles from the South Pole, 1,200 miles from Patriot Hills Base Camp, and 2,600 miles from South Africa (the closest continent), Dronning Maud Land is one of the most stark, beautiful, and remote places on Earth. The landscape looks as though it was created in a fairytale — great rock pillars, tooth-like peaks, and jagged spires pop up from the flat white landscape. Passing by the range, our runway comes into sight.



Our aircraft will land on an area of blue ice that is 3,300 ft. (1,000 meters) above sea level. The blue ice remains clear of snow due to the katabatic winds that tunnel down from the mountains with great force.

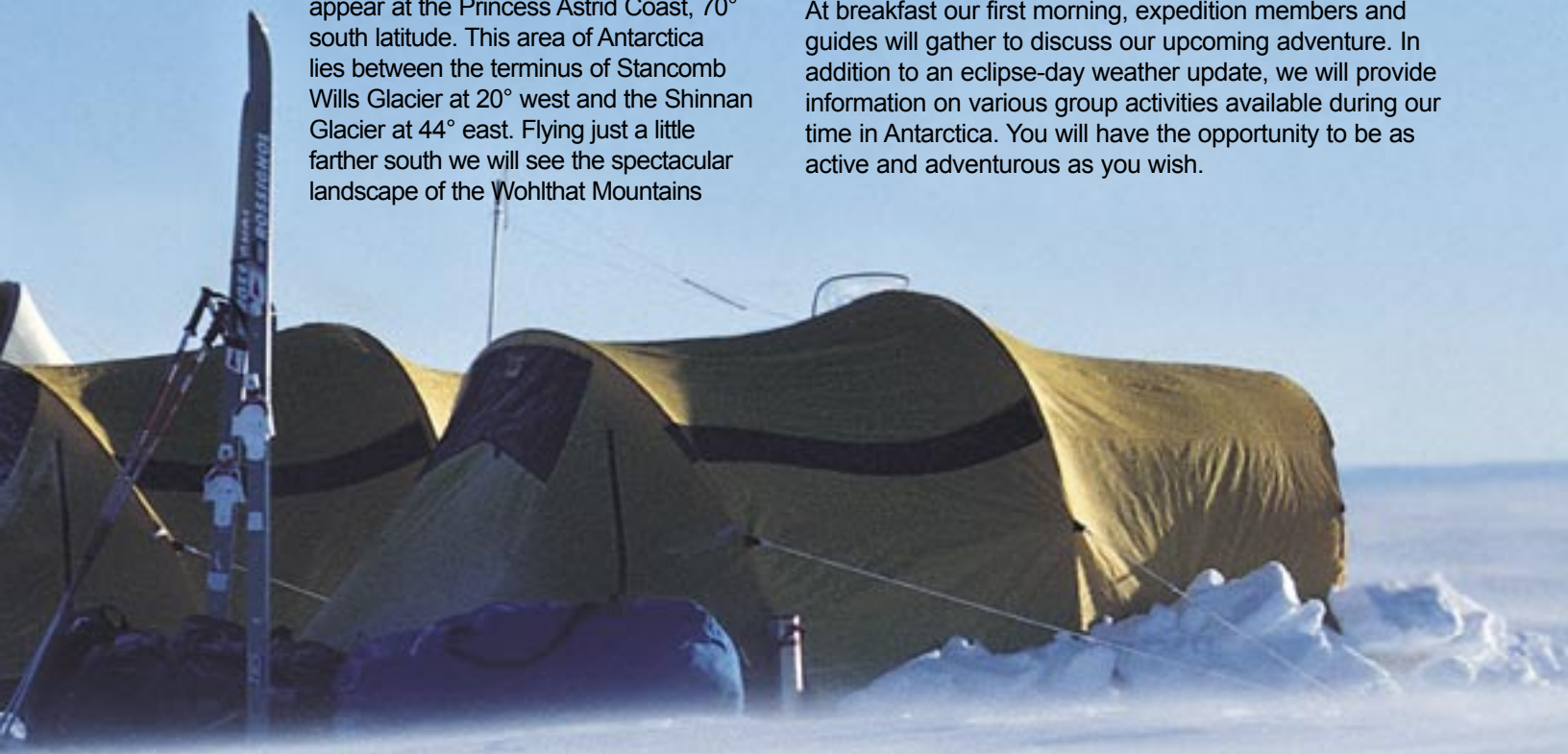
We will be met and transferred to our awaiting chartered DC3 and Twin Otter aircraft for the short hop to our specially selected campsite within the path of totality. (The exact location of this camp

will be determined based upon weather conditions prior to our arrival on the ice.) Welcome to our Total Solar Eclipse camp at Eclipse 1, Antarctica!

An introduction to the staff is followed by a tour and orientation of the camp and the surrounding area. Overnight: Eclipse 1 Base Camp (7 nights) B/L/D

Days 5—10, Mon – Sat, Nov. 17 – 22 Antarctic Experiences

At breakfast our first morning, expedition members and guides will gather to discuss our upcoming adventure. In addition to an eclipse-day weather update, we will provide information on various group activities available during our time in Antarctica. You will have the opportunity to be as active and adventurous as you wish.



For reservations and information contact: eclipse@tq-international.com

From our base camp at Eclipse 1 you can discover the beauty and magnificence of this continent and undertake exciting trips in and around Dronning Maud Land safely using a wide variety of transportation. These trips can be of differing durations and include remote mountain summits, unique geological features, and an opportunity to live and breathe this huge continent — its changeable climate, its wondrous sights, and an appreciation of why it draws explorers, adventurers, and mountaineers.

Some of the topics we will explore during our six days on the ice include astronomy and meteorite research, the Antarctic environment and weather, navigation, communications and history. B/L/D daily

**Day 11 – Sun, Nov. 23
ECLIPSE DAY**

After assessing the weather along the eclipse track, we will decide on the best place to view the event, aiming to get as close to the centerline and the point of maximum eclipse as possible. With our aircraft on standby we will have maximum flexibility in selecting our viewing location. We expect to have plenty of time to set up telescopes, cameras, and other equipment.

We will have the pristine white beauty of Antarctica as our backdrop while the celestial drama unfolds before us. The Sun (and Moon!) will hover barely 9 degrees above

the southeastern horizon. With zero pollution, the clarity of the air should provide views of the solar corona unlike those seen at any previous eclipse. Mercury and Venus should be easily visible to the right of the Sun during totality, which will last about 1 minute 45 seconds.



After the eclipse we will return to our base camp for a celebratory dinner at which we can reflect on the day's experiences. A great occasion —and a great story for the grandchildren! B/L/D

**Day 12 – Mon, Nov. 24
Eclipse 1 – Punta Arenas**

Weather permitting, our Ilyushin jet will arrive at Blue 1 for our return flight to Punta Arenas. This evening, join us for a farewell dinner and recap of our Antarctica eclipse adventure. Overnight: Hotel Austral, Punta Arena B/L/D

**Day 13 – Tue, Nov. 25
Depart Chile**

This morning we transfer to the airport for the flight to Santiago to connect with our overnight flights home. B/Meals aloft

Day 14 – Wed, Nov. 26 Arrive Home
Arrive back in our home cities. Meals aloft

**Historic
Antarctic Expeditions**

1895
H. Bull (Norway) and C. Borchgrevink make first known landing on Antarctica mainland outside the Antarctic Peninsula.

1911
Roald Amundsen (Norway), and four companions first to reach the South Pole on December 14.

1915-1916
Ernest Shackleton (Britain) marooned when ship Endurance is crushed by pack ice.

1929
Richard Byrd (United States) is first to fly over the South Pole.

2003
TravelQuest and Sky & Telescope (United States) undertake the first Antarctic land expedition dedicated to witnessing a total eclipse of the sun.

